

Weekly Notice No 108 of Operations on the Gunfleet Sands Offshore Wind Farm.

Circulation:

Natural England	Alexandra Fawcett	Alexandra.Fawcett@naturalengland.org.uk
Harbour Master Port of London	Roy Stanbrook	Roy.stanbrook@pola.co.uk
Port of London	Peter Steen	peter.steen@pla.co.uk
Harbour Master Brightlingsea	Bernie Hetherington	mail@brightlingseaharbour.org
Thames Coastguard Sector Manager	Steve Moffatt	Steve.Moffatt@mcga.gov.uk
Thames Coastguard MRCC	Watch Manager	wm.thames@mcga.gov.uk
Fisheries Liaisons Officer	Richard Jacobs	richardjacobs@sys3internet.net
Marine Pollution Officer English Nature		Steve.benn@naturalengland.org.uk
Marine and Fisheries Agency	Gary James	gary.james@mfa.gsi.gov.uk
Marine and Fisheries Agency	Benjamin Lander	Benjamin.Lander@mfa.gsi.gov.uk
UK Hydrographic Office		hcdfiles@ukho.gov.uk
UK Hydrographic Office	Alan Randle	alan.randle@ukho.gov.uk
Sillson Communication	Peter Sills	peter@sillson.com
Tendring District Council	Martin Court	mcourt@tendringdc.gov.uk
Science Officer Tendring District Council	A Rutson- Edwards	arutson-edwards@tendringdc.gov.uk
Kingfisher Information Services	Neil Murray	kingfisher@seafish.co.uk
HM Customs	Daniel Thatcher	Daniel.thatcher2@hmrc.gsi.gov.uk
RYA East	Chris Edwards	erecra@talktalk.net
RYA webmaster	Gerry Askham	gerry@hurst-marine.co.uk
Harwich VTS		harwich.vts@hha.co.uk
Harwich Haven Authority	Neil Glendinning	dhm.operations@hha.co.uk
MFA District Inspector	Barrie Smart	barrie.smart@mfa.gsi.gov.uk
MFA	Nick Mynard	nick.mynard@marinemanagement.org.uk
Wattisham RAF	Ops JNCO	WTT22Sqn- BfltOpsJNCO@wattisham.raf.mod.uk
Wattisham RAF	Opps asst 3	WTT22Sqn- BfltOpsAssistant3@wattisham.raf.mod.uk
Wattisham RAF	Opps asst 5	WTT22Sqn- BfltOpsAssistant5@wattisham.raf.mod.uk
QP		mc.weeklynotice@e2.dk
	Tony Talbot	TonyT@nse.co.uk
Dong Energy Project manager	Frits Kristoffersen	frikr@dongenergy.dk
Dong Energy HSE Eng.	Jens Knudsen	jenje@dongenergy.dk
Dong Energy Environmental Manager	Trine Hoffmann Sørensen	trihs@dongenergy.dk
Dong Energy Offshore Operation manager	Lars Ekeroth	larek@dongenergy.dk

Dong Marine Coordinators		gunfleettraffic@dongenergy.dk
Dong Energy	Tue Keller	tueke@dongenergy.dk
Searoc Engineering Manager	Tom Frood	Tom.frood@searoc.com
Searoc Senior Project Secretary	Alix Paley	alix.paley@searoc.com

Cc: Yacht Clubs in Surrounding Areas

All offshore construction work is overseen by a Marine Coordinator and is published in the Notice to Mariners.

The Marine Coordinator can be contacted anytime.

The Marine Coordinators Office is located at the Dong Office in Tower Street, Brightlingsea.

The Marine Coordination office is now only manned 12 hours per day. The Marine Coordinator is however, still contactable 24 hours a day on the mobile number.

The Marine Coordination Office has been extended and will close some time in July.

Contact details are as follows

Phone: +441206 307915

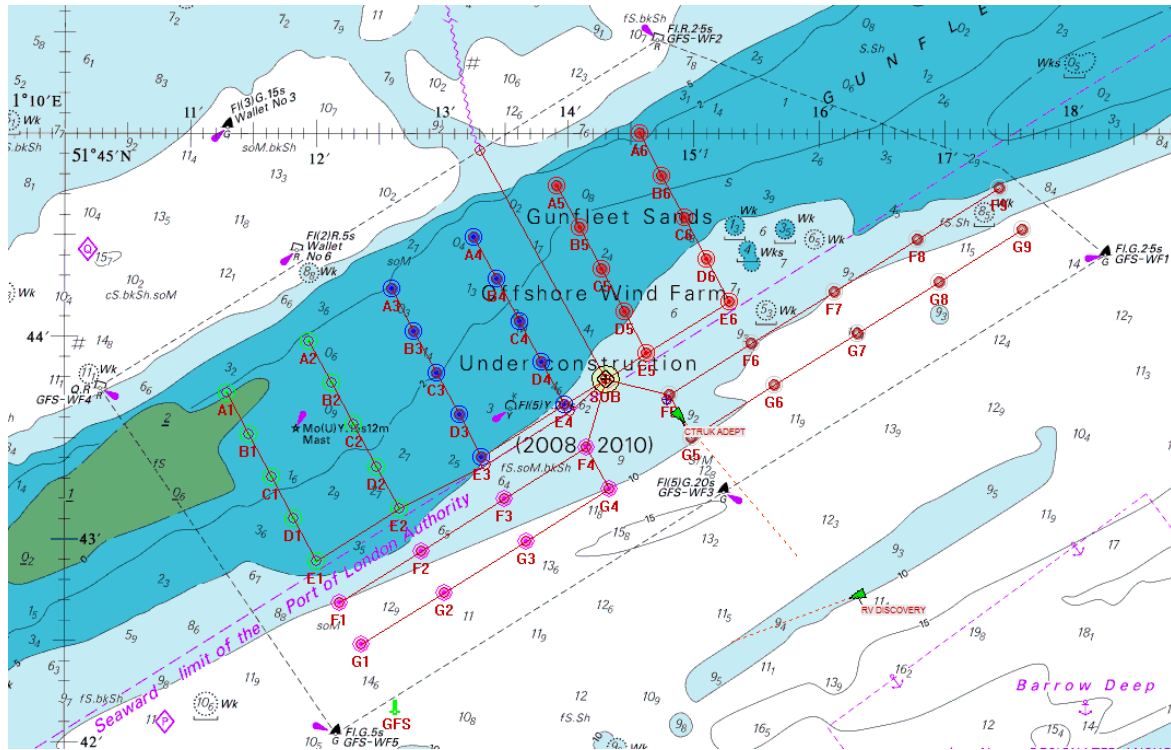
Mobile phone: +447920 854386 (the 24/7 no.)

Mail: gunfleettraffic@dongenergy.dk

Notice to Mariners Issued:

Port of London- L12 of 2008

Gunfleet Sands Offshore Wind Farm Safety Zone:



The following positions define the boundary of the construction works

51° 43'.6702 N	001° 10'.8918 E	51° 45'.1044 N	001° 14'.5686 E
51° 44'.1910 N	001° 15'.4919 E	51° 42'.7573 N	001° 11'.8159 E
51° 42'.8171 N	001° 11'.9698 E	51° 44'.1910 N	001° 15'.4919 E
51° 44'.1107 N	001° 15'.5736 E	51° 44'.8369 N	001° 17'.4263 E
51° 44'.5116 N	001° 17'.7103 E	51° 42'.4121 N	001° 12'.3243 E

A 500 metre safety zone surrounds Gunfleet Sands 1 & 2

Traffic in the Wallet north-west of the Site is guided by two red can buoys.

Red can Buoy	QR	51° 43'.761N	001° 10'.294E
Red can Buoy	FI R	51° 45'.469N	001° 14'.704E

Traffic in the deepwater route south-east of the Site is guided by three conical buoys.

Green conical Buoy	FI G 5s	51° 42'.032N	001° 12'.164E
Green conical Buoy	FI G (5) 5s	51° 43'.230N	001° 15'.240E
Green conical Buoy	FI G 2.5s	51° 44'.419N	001° 18'.284E

Vessels crossing Gunfleet Sand on a straight course between the red can buoy in pos.: 51° 45'.469N 001° 14'.704E and the green conical buoy in pos.: 51° 44'.419N 001° 18'.284E, are passing through the safety zone and the construction working area.

The Export Cable has been laid, running from Clacton Substation near Holland-on Sea to Offshore Substation. The entire length of the export cable is now buried.
The following positions define the export cable route:

51° 43'.79N., 001° 14'.30E.(sub station)
51° 45'.00N., 001° 13'.24E.
51° 45'.72N., 001° 13'.01E.
51° 45'.98N., 001° 13'.06E.
51° 48'.28N., 001° 12'.79E.
51° 48'.38N., 001° 12'.68E.(shore)

**All vessels not involved in construction activities are requested to keep a safe distance from construction vessels and the safety zone whilst transiting the area.
All vessels should proceed with caution whilst navigating and/or working in the area.**

Gunfleet Sands Current Progress:

Export Cable is laid from Clacton Substation to Offshore Substation.

Offshore Sub-station is installed.

All mono-piles, transition pieces and turbines have been installed.

**All inter array cables are now laid, buried and approved.
All cable operations are now completed.**

The Met Mast and Wave Rider buoy have been removed, no obstructions remain.

The Safety Zone will be lifted and the marker buoys will be removed within the upcoming weeks.

Work planned for the next 7 days:

Gun Fleet Sands 1 & 2 Offshore Wind Farm.

Activity:

- All cable operations have now been completed.
Cable vessel **Nico** and Crew Transfer Vessel **Windspeed 4** have now left the Site.
- There are frequent Crew Boat movements between the wind farm and Brightlingsea by the **Offshore Progress**, **Offshore Provider**, and **CTruck Adept**.
- The Marine Coordination office is now only manned 12 hours per day, and has now moved up to the Dong Office in Tower Street. The Marine Coordinator is however, still contactable 24 hours a day on the mobile number.
- The Marine Coordination Office has been extended and will close some time in July.

List of vessels on site:

Offshore Progress and Offshore Provider
Personnel Transfer Vessels

Ctruk Adept
Multi task vessel



Relevant plans to current activity:

	Name
A	Construction phase Plan Rev. 1.
B	Emergency Response Plan + Emergency Response Cooperation Plan Rev. 2.
C	Project Environmental Management Plan Rev. 2.
D	Marine Coordination procedure
E	F 10 Construction Notice – issued to HSE
F	Contractors method statements and risk assessments
G	FEPA License GFS 1. And 2.

Notes:

- A Detailed method statements and risk assessments are available.
- B This document is issued every weekend, describing activities for the following 7 days.
- C Normal liaison is between Marine Coordinator and Dong Energy Brightlingsea Office to
 - i) Harbour Master Roy Stanbrook.
 - ii) Harbour Master Bernie Hetherington.
 - iii) Thames Coastguard

Comments from Harbour Masters (If required please insert here and return):

Report made by: Marine Coordinator DONG Energy.
Signed: Carsten Leth.
Date: 4th July 2010

Attachment: Vessel list